

1984

Illustrated Catalogue (7 plates) Price £1

GLENDINING & Co.

7, Blenheim Street, New Bond Street
London W1Y 9LD

Phone 01-493 2445 (3 lines)

Telegrams "GLENS, LONDON, W.1."

CATALOGUE OF A COLLECTION OF

ENGLISH AND SCOTTISH COINS

also

**a few commemorative medals and
United States coins**

DAY OF SALE

MONDAY, 9th APRIL, 1984

commencing at 1 p.m. precisely

ON VIEW Thursday and Friday prior to sale

9 a.m. to 12 noon and 1 p.m. to 4 p.m.

AMERICAN NUMISMATIC SOCIETY

WAR 10 587

CONDITIONS OF SALE

- FIRST.**—The highest bidder to be the buyer; and if any dispute arises between two or more bidders, the lot so in dispute shall be immediately put up again and re-sold, provided the Auctioneer cannot decide the said dispute.
- SECOND.**—The Auctioneer has absolute discretion to divide any lot, to combine any two or more lots, to withdraw any lots, to refuse bids and to regulate the bidding.
- THIRD.**—All lots are put up for sale subject (a) to any reserve price imposed by the seller and (b) to the right of the seller to bid either personally or else by any one person who may be the Auctioneer.
- FOURTH.**—The purchasers to give in their names and place of abode, and to pay down 25% of the purchase price or more in part payment, or the whole of the purchase-money, *if required*; in default of which the lot or lots so purchased to be immediately put up again and re-sold.
- FIFTH.**—Each lot is believed to be genuine, but should any lot prove to be a forgery, or reprint, or wrongly described in the catalogue, the purchaser is at liberty to take or reject it, provided always that notice of such rejection be made and the lot returned within seven days from date of sale.
- SIXTH.**—The Auctioneers will not hold themselves responsible for any action that may arise, acting solely as agents between buyer and seller and for both equitably.
- SEVENTH.**—The Auctioneers will not hold themselves responsible for the safe custody of any lots left more than three days after the sale.
- EIGHTH.**—Buyers must satisfy themselves as to the accuracy of their purchases at the time of delivery. The Auctioneers not to be held responsible for any discrepancy which might be discovered after the lots have been removed from their premises.
- NINTH.**—A daily storage fee of £0.25 per lot will be payable by the purchaser on lots not removed within seven days of the date of sale. The Auctioneers reserve the right to re-sell by Auction or privately, without notice to the buyer, all lots not removed from the Auctioneers' premises within fourteen days of the date of sale.
-

Please Note

The metal in which the coins are struck is indicated thus: —

A=gold, *AR*=silver, *Æ*=copper or bronze.

El=Electrum (an alloy of gold and silver).

Bl=Billon (an alloy of silver and copper).

Care is taken to describe accurately the condition of coins and medals, using the following scale: *Extremely fine*, *Very fine*, *Fine* and *Good*. Where no condition is stated it may be assumed that the coins and medals are not in good condition.

List of Prices Bid

Price 25p

GLENDINING & Co.7 Blenheim Street, New Bond Street
London, W1Y 9LD.

SALE OF

ENGLISH AND SCOTTISH COINS

HELD ON

MONDAY, 9th APRIL, 1984

Lot	£	Lot	£	Lot	£	Lot	£
1 ...	620	27 ...	70	53 ...	160	79 ...	210
2 ...	580	28 ...	150	54 ...	140	80 ...	310
3 ...	260	29 ...	120	55 ...	100	81 ...	210
4 ...	360	30 ...	150	56 ...	220	82 ...	280
5 ...	180	31 ...	120	57 ...	280	83 ...	700
6 ...	260	32 ...	780	58 ...	270	84 ...	160
7 ...	100	33 ...	290	59 ...	460	85 ...	85
8 ...	230	34 ...	190	60 ...	320	86 ...	250
9 ...	240	35 ...	170	61 ...	1,100	87 ...	250
10 ...	70	36 ...	170	62 ...	200	88 ...	130
11 ...	100	37 ...	190	63 ...	350	89 ...	100
12 ...	120	38 ...	170	64 ...	360	90 ...	160
13 ...	45	39 ...	180	65 ...	370	91 ...	360
14 ...	80	40 ...	160	66 ...	110	92 ...	290
15 ...	900	41 ...	230	67 ...	220	93 ...	160
16 ...	720	42 ...	190	68 ...	270	94 ...	320
17 ...	440	43 ...	260	69 ...	200	95 ...	210
18 ...	290	44 ...	170	70 ...	70	96 ...	340
19 ...	420	45 ...	180	71 ...	220	97 ...	270
20 ...	1,450	46 ...	150	72 ...	230	98 ...	150
21 ...	170	47 ...	170	73 ...	210	99 ...	160
22 ...	170	48 ...	140	74 ...	95	100 ...	180
23 ...	720	49 ...	280	75 ...	35	101 ...	210
24 ...	330	50 ...	140	76 ...	65	102 ...	190
25 ...	220	51 ...	220	77 ...	310	103 ...	350
26 ...	140	52 ...	170	78 ...	370	104 ...	250

Auctioneers:

Glendining & Co.,
7, Blenheim Street,
New Bond Street,
London W1Y 9LD.
Telephone 01-493 2445 (3 lines)

CATALOGUE OF

A Collection of

English & Scottish Coins

including a good series of 10th-Century issues,
also a few commemorative medals and United States coins

This catalogue lists part of what originally must have been a much more comprehensive collection of coins, formed by the late J. W. Spurway, of Leicester, a member of the British Numismatic Society, 1906-1930, and added to by his son the late N. B. Spurway.

Although the property is very patchy, some series being quite well represented and yet others not at all, it includes several most interesting, often unrecorded, pieces, e.g., lots 20, 24, 32, 95, 170, 226 and 269.

Date of Sale:

Monday, 9th April, 1984

commencing at 1 p.m. precisely.

On Public View:

Thursday and Friday prior to sale
9 a.m. to 12 noon and

1 p.m. to 4 p.m.

CATALOGUE OF A COLLECTION OF
ENGLISH AND SCOTTISH COINS

also

A few commemorative medals and
United States coins

DAY OF SALE

Monday, 9th April, 1984

commencing at 1 p.m. precisely

Celtic Coins

LOT

- 1* Gallo-Belgic A (Ambiani), c. 125-100 B.C., *A* Stater, laureate head of Apollo left, *rev.* horse left (Seaby 1; Mack 3). *Very fine and rare.* 1
- 2* ———— *A* Quarter-Stater, similar but with head and horse to right (S.2; M.2). *Scrape on wreath, but very fine, rare.* 1
- 3* Gallo-Belgic E (Ambiani), c.57-45 B.C., uniface *A* Stater, disjointed horse right, large pellet below (S.7; M.27). *Good very fine.* 1
- 4* British L, Whaddon Chase type, c.45-20 B.C., *A* Stater, debased laureate head right, *rev.* spirited horse right (S.31; M.135). *Reverse off-centre, very fine.* 1
- 5 ———— ———— ———— Similar (S.31; M.135). *Edge splits, but fine.* 1
- 6 ———— ———— ———— Similar, *rev.* exergual pattern with pellet (S.31; M.135). *Very fine.* 1
- 7 British O, Geometric type, Sussex group, c.80-60 B.C., *A* Quarter-Stater (S.49; M.41). *Fine.* 1
- 8 British QB, British "Remic" type, c. 45-25 B.C., uniface *A* Stater, triple-tailed horse right, wheel below (S.42; M.59). *Two edge splits, otherwise nearly very fine.* 1

Lot

- 9 Atrebatas and Regni, Verica, c. A.D. 10-40, *AR* Stater, COM.F on tablet, *rev.* horseman right, *VIR* above, *REX* below (S.98; M.121). *Obverse very fine, reverse fine.* 1
- 10 Durotriges, c.60 B.C.-A.D. 20, *AR* Stater (S.60; M.317), *spade* mark on obverse, *fine*; Armorican, c. 75-50 B.C., billon Staters (2), *fine and better*; others (3) 6
- 11 Icenii, Anted, *AR* Units (2), both with two crescents, *rev.* horse right with *mono* below (S.273; M.419). *Very fine and better.* 2
- 12* Elusates (S.W. France), *AR*, debased head right, *rev.* tall ant-like horse left (BN 3587). *Trace of verdigris, extremely fine.* 1
- 13 Biturges Cubi (Central France-Bourges), small *AR*, head left with long pointed nose, *rev.* horse left, cross pommée below (BN 4108) and Sequani (Eastern France-Jura), Billon, head left, *rev.* horse left (BN 5538). *Both fine.* 2
- 14* Viroduni (N.E. France-Verdun), Billon, head left, *rev.* boar (?) left, annulet feet with annulet between (BN 9044). *Scraped both sides but good very fine.* 1

English Gold Coins

- 15* Richard II, London Half-Noble, Lettering III (small, irregular), king in ship, no marks, *rev.* floreate cross, *R* in centre (N.1312; S.1667). *Split down sword to centre and crease along bulwarks, fine and very rare.* 1
- 16* Henry V, London Noble, Type C, king in ship, mullet by sword arm and broken annulet on ships side, *rev.* floreate cross, *h* in centre (N.1371; S.1742). *Extremely fine.* 1
- 17* Henry VI, London Half-Noble, Annulet Issue, king in ship with annulet by sword arm, *rev.* floreate cross, annulet in one spandril of tressure (N.1417; S.1805). *Edge flaw (5 o'clock) but good very fine.* 1
- 18 ——— A similar coin. *A little short of flan and water-worn, almost very fine.* 1

Lot

- 19* — York, Quarter-Noble, Annulet Issue, m.m. large lis, shield with two lis above, *rev.* floreate cross, lis in centre (N.1422; S.1816). *Very fine.* 1
- 20* — Restored, London Angel, m.m. Restoration Cross on *rev.* only, St. Michael slaying the dragon, reads HENRICVS and FRANCIE, trefoil stops (beginning and end of legend), *rev.* ship bearing shield, cross above with h and lis at sides, pellet stops with two trefoils below bowsprit (N.1613; S.2078; Allen C/f). *Very fine and rare, the die combination apparently unrecorded.* 1
∴ In his text, Allen lists reverse "f" incorrectly (cf. pl. IV, f).
- 21 Charles I, Tower Crown, Group A, m.m. lis (N.2179; S.2703). *Almost very fine.* 1
- 22* — — Group B, m.m. lis (small on *obv.*, large on *rev.*) (N.2182; S.2702). *Very fine.* 1
- 23* Charles II, Hammered Coinage, Unite, m.m. crown on *obv.* only, Type I without mark of value, small lettering, *rev.* with double cut D in CONCORDIA and flawed G in REGNA (N.2753; S.3301; Schneider 8/-). *Very fine (jeweller's mark above crown), a rare variety.* 1
- 24* — — Double Crown, m.m. crown on *obv.* only, *obv.* Type I without mark of value, large lettering, CAROLVS. ILD: G: MAG: BRI: FR: ET. HI. REX, *rev.* Type II with small lettering (N.2755/2756; S.3302/3303; neither die noted by Schneider). *Test mark on edge, fine, the mule between Type I and Type II not recorded for the series.* 1
- 25* — Milled Coinage, Half-Guinea, 1676, rounded truncation (MCE 100). *Very fine.* 1
- 26 James II, Guinea, 1685, 1st bust (MCE 123). *Good fine.* 1
- 27 — Touch Piece, St. Michael slaying the dragon, *rev.* Sovereign of the Seas (Woolf, BNJ XLIX, dies 2/1 (an old die of Charles II), pl. xxii, 31/35). *Pierced above angel's right shoulder, very fine but polished.* 1
- 28 George III, "Spade" Guinea, 1790. *Some marks but good very fine.* 1

LOT

- 29 — Third-Guineas (2), 1798, 1803 and Quarter-Guinea, 1762.
First with scratches on obverse, otherwise all very fine. 3
- 30 George IV, Half-Sovereigns (2), both 1823. *Very fine.* 2
- 31 Victoria, Half-Sovereign, 1890, and George V, Sovereign,
1913, *fine and very fine*; France, 10-Francs, 1857 A,
fair. 3

Anglo-Saxon and Norman Pennies

- 32* Archbishop Plegmund, Two Line (late, with round O), Eic-
mund (N.257; S.900). *Very fine and rare.* 1
- 33* Burgred of Mercia, Type A with moneyer's name Heawulf
between lunettes (N.423; S.938). *Almost extremely fine.* 1
- 34 — (3), similar to last, moneyer's Beagstan, Heawulf and
Hereferth. *Chipped and corroded, about fine.* 3
- 35* St. Eadmund (Vikings in East Anglia), Abbonel (N.483;
S.960). *Almost extremely fine.* 1
- 36* — Adalbert. *Almost extremely fine.* 1
- 37 — (2), "Aoarbert" and Arus. *Both with reverse slightly
double struck, very fine.* 2
- 38* — Adradus. *Extremely fine.* 1
- 39* — Ansiger. *Almost extremely fine.* 1
- 40* — Bado. *Almost extremely fine.* 1
- 41 — Bosecin (2), *one with reverse corroded*, and Daegmund,
chipped, otherwise all very fine or better. 3
- 42* — "Erdnunc" blundered (cf. BMC 389-390). *Extremely fine.* 1
- 43* — Frethemund. *Extremely fine.* 1
- 44* — Hlodovicus. *Almost extremely fine.* 1

LOT

45*	— Meuther. <i>Almost extremely fine.</i>	1
46*	— Odo (ODO MONE LIAX, BMC 458). <i>Very fine.</i>	1
47*	— Otbert. <i>Good very fine.</i>	1
48*	— Robert. <i>Very fine.</i>	1
49*	— Sigemund. <i>Extremely fine.</i>	1
50*	— Tedwine blundered (cf. BMC 544). <i>Almost extremely fine.</i>	1
51*	— Wine. <i>Extremely fine.</i>	1
52*	— <i>rev.</i> blundered (cf. SCBI, East Anglia, 1100). <i>Extremely fine.</i>	1
53*	Cunnetti (Vikings in Northumbria), with patriarchal cross (N.501; S.993). <i>Extremely fine.</i>	1
54	— A similar coin. <i>Extremely fine.</i>	1
55	— Another, similar. <i>Extremely fine.</i>	1
56	— Others (2), similar. <i>One with reverse slightly double struck, almost extremely fine.</i>	2
57*	Aethelberht of Wessex, moneyer's name Beagmund between limbs of beaded cross (N.620; S.1053). <i>Chipped at edge, obverse nearly extremely fine, reverse with some corrosion, fine.</i>	1
58*	— Similar, moneyer Wulfheard. <i>Slight chips at edge, almost very fine.</i>	1
59*	Alfred, Two Line, "Edward the Elder" neat style, moneyer Aethered (N.639; S.1067). <i>Trace of corrosion, otherwise extremely fine.</i>	1
60*	— Similar, moneyer Aethelwulf. <i>Some corrosion but very fine.</i>	1
61*	— Portrait type with <i>rev.</i> London monogram (N.644; S.1061). <i>Right edge slightly chipped and with die flaw down cheek, very fine and rare.</i>	1

LOT

- 62* Edward the Elder, Two Line, Aethelstan (N.649; S.1087).
Very fine. 1
- 63* ——— Aethelwine (?), legends blundered both sides. *Extremely fine.* 1
- 64* ——— Aethelwulf. *Faint scratches both sides and corrosion spot on reverse, otherwise nearly extremely fine.* 1
- 65* ——— Aethered. *Almost extremely fine.* 1
- 66 ——— Beahred. *Chipped at top and obverse flawed, almost very fine.* 1
- 67* ——— Beahstan. *Traces of corrosion, almost extremely fine.* 1
- 68* ——— Beornwulf. *Good very fine.* 1
- 69* ——— Beorhtwulf. *Discoloured but very fine.* 1
- 70 ——— Brece. *Plugged (?) in centre and cracked to edge, otherwise very fine.* 1
- 71* ——— Deorwald. *Traces of corrosion, but very fine.* 1
- 72* ——— Eahlstan. *Slight verdigris, very fine with patchy dark tone.* 1
- 73 ——— Eardulf. *Some surface corrosion, otherwise very fine.* 1
- 74 ——— Eclaf. *Top edge broken and repaired, some verdigris, otherwise very fine.* 1
- 75 ——— Fritheberht. *Cracked (8 o'clock) to centre, otherwise nearly very fine.* 1
- 76 ——— Gareard. *Edge crack (4 o'clock), almost very fine.* 1
- 77 ——— Sprot. *Discoloured and with some corrosion, otherwise very fine, overstruck, perhaps on a Rose (moline in pommée) type (N.655; S.1074; BMC ii).* 1
- 78* ——— Stefvan. *Almost extremely fine.* 1

LOT

- 79* ——— Tila. *Obverse extremely fine, reverse nearly so, but with flan flaw.* 1
- 80* ——— Torthelm. *Extremely fine.* 1
- 81* ——— Portrait/Two Line, Burhelm (N.651; S.1084). *Head flat and with fine scratches both sides, fine and rare.* 1
- 82* ——— Gareard. *Slight edge chip at top, very fine (obverse with blue tone), rare.* 1
- 83* ——— Tila. *Discoloured and spot of corrosion on reverse, better than very fine, rare.* 1
- 84 Aethelstan, Two Line (South and Mercia), Biorhtric (N.668; S.1089). *Edge crack (5 o'clock) but fine.* 1
- 85* ——— Dryhtwald, *rev.* cross above and pellet-in-annulet below moneyer's name. *Cracked nearly in two pieces, otherwise fine, a rare variety.* 1
- 86 ——— Johann, *rev.* single pellet below moneyer's name. *Obverse with some verdigris, very fine, reverse nearly so but slightly double struck.* 1
- 87* ——— Two Line (North Eastern with large lettering), Winele. *Some verdigris, otherwise nearly extremely fine.* 1
- 88 Eadmund, Two Line, Dudig (N.688; S.1105). *Slight edge chips and cracked (no daylight), better than fine.* 1
- 89 ——— (North Eastern with large lettering), Manna. *Very fine but cracked (from edge, round inner circle).* 1
- 90 Eadred, Two Line, Eardwulf (N.706; S.1113). *Edge chipped and reverse with fine scratches, fine, overstruck on a coin of similar type.* 1
- 91* ——— Gothin, *rev.* M a prone E. *Extremely fine.* 1
- 92* ——— Ingelgar (a "York" moneyer). *Almost extremely fine.* 1
- 93* ——— Osferth. *Obverse pitted, very fine.* 1
- 94* ——— Theodmaer. *Almost extremely fine.* 1

Lot

- 95* ——— Waregod. *Edge chips and corroded, otherwise very fine, a rare moneyer listed by North for Eadmund (cf. SCBI, Edinburgh, 210), but not for this reign.* 1
- 96* ——— North Western, three crosses with rosette above and below moneyer's name (N.707; S.1113), Aetardes, *obv. reads REX S. Extremely fine.* 1
- 97* ——— ——— Cross and two annulets with rosette above and below (N.708; S.1113), Frarth. *Crinkled, very fine.* 1
- 98* ——— ——— ——— Wilaf. *Crinkled and cracked, very fine.* 1
- 99* ——— ——— ——— Wulfstan, *obv. reads EADRED MON (cf. BMC 85). Small edge chip and with surface cracks, otherwise very fine.* 1
- 100* Eadwig, Two Line, Heriger (N.724; S.1122). *Almost very fine.* 1
- 101* ——— Iun, large coarse lettering (cf. Chester 1950 Hoard, BNJ XXVII, 341, now in BM). *Crinkled, very fine.* 1
- 102 Eadgar, Two Line (N.741; S.1129), Adelaver (2). *Good very fine and fair.* 1
- 103 ——— (2), Adlune, *good very fine*, and Albutic, *very fine.* 2
- 104 ——— Aesculf, *crinkled, very fine*, and Albutic, *some verdigris, very fine.* 2
- 105 ——— Eanulf, *fine*, Farman (cf. SCBI, Oxford, 390), *very fine*, Heriger, *crinkled, very fine*, and another, *broken.* 4
- 106 ——— (2), both Manna, one with trefoils joined. *Good very fine, other nearly very fine.* 2
- 107* ——— Circumscription, Fastolf (N.748; S.1134). *Almost extremely fine.* 1
- 108 ——— (2), both Herolf. *Almost extremely fine and almost very fine.* 2
- 109 Aethelred II, First Hand (2), Lincoln, Unbein, *cracked, almost very fine*, and Winchester, Raegenulf, *almost very fine.* 2

Lot

- 110 — Second Hand, Winchester, Brihtred, *very fine*, and Crux, Exeter, Edric, *rather cracked, otherwise very fine.* 2
- 111 — Crux (3), London, Leofwine, Southwark, Godric, and Wallingford, Aelfric. *Last chipped and cracked, otherwise all very fine.* 3
- 112 — Long Cross, Bath (2), Aelfric and Edstan. *Extremely fine and very fine, rare.* 2
- 113 — — (3), Lincoln, Aefsig, *extremely fine*, London, Aethelwerd and Southampton, Swileman, *both fine.* 3
- 114 — — Thetford (2), Mana, *very fine*, and Osbern, *obverse scraped, fine, reverse very fine.* 2
- 115 — — (2), Stamford, Swertgar, and York, Cytel. *Both very fine.* 2
- 116 — — (3), Wallingford, Mana, *turned over in the die*, Wilton, Saewine, and Worcester, Goda, *pierced, rare. Except as stated, very fine.* 3
- 117 — Helmet, London (2), Aethelmaer and Brunstan. *Very fine and better.* 2
- 118 — — — (2), Godric and Leofric. *Both nearly fine.* 2
- 119 — — — (2), both Leofwold, one with *rev. extra pellets in 1st and 3rd quarters. Both very fine.* 2
- 120 — — — (2), Swetinc and Wulfstan. *Both very fine.* 2
- 121 — Last Small Cross, Cambridge, Leofsig, *outer circle chip*, and Canterbury, Eadwold. *Except as stated, very fine.* 2
- 122** — — London (2), Asoil, 20.7 (Hild. 2221), *almost very fine*, and Aelman, 15.7 (a moneyer not listed by North), *corroded and cleaned, almost very fine, both probably imitative.* 2
- 123 — — — (3), Ealdgar, *cracked, almost very fine*, Godere, *very fine*, and Godman, *almost extremely fine but a little bent.* 3

LOT

- 124 ——— (2), Godman, *severely cracked*, Leofwine, *inner circle crack, fine*, and York, Thorolf, *good very fine.* 3
- 125* Canute, Quatrefoil Stamford, ÆSCMAN MO STAN (H.3228; cf SCBI, Lincolnshire, 1231). *Extremely fine with dark tone, rare.* 1
- 126 ——— Helmet, London (2), both Aelfgar. *Extremely fine and very fine.* 2
- 127 ——— (2), Aelfwig and Aelfwine. *Both very fine.* 2
- 128 ——— (2), Brihtmaer and Edgar. *Very fine and extremely fine.* 2
- 129 ——— (1), Godwine, and York, Asgut. *Both very fine.* 2
- 130* ——— Short Cross, Thetford, ALFPOLD ON ðEO (H.3547-9; cf. Carson 104). *Slightly double struck, almost extremely fine.* 1
- 131* Harold I, Fleur de Lis, Dover, EDPINE ON DOFR (H.112-3). *Almost extremely fine, rare.* 1
- 132* ——— London, GOLTSIG ON LVN (H.647). *Very fine.* 1
- 133* ——— Norwich, MANNA ON NORÐ (H.789-90). *Very fine and rare.* 1
- 134* ——— York, SPEGEN ON EOF (H.207). *Bust weak, otherwise very fine.* 1
- 135* Harthacnut, Danish issue of Lund, radiate bust left, *rev.* long cross voided, pellets and annulets in alternate angles. *Almost very fine.* 1
- 136* Edward Confessor, Trefoil-Quadrilateral, York, SÆFVHEL ON EOFR (SCBI, Merseyside, 728). *Obverse slightly double struck, better than very fine, the moneyer rare.* 1
- 137* ——— Small Flan, London, PVLPIE ON LVND. *Trace of crack, extremely fine.* 1
- 138* ——— Expanding Cross (Heavy), Colchester, LEOPPERD ON COLE, *rev.* with extra pellet in 2nd quarter (Turner 121). *Extremely fine and very rare.* 1

Lot

- 139* ——— Gloucester, EAPVLF ON GLEPECE (SCBI, Gloucester, 87-8). *Extremely fine.* 1
- 140* ——— Lincoln, OSFERÐ ON LINCOLIE (Mossop Bb). *Good very fine.* 1
- 141 ——— (3), Norwich, Thurferth, *obverse very weak, reverse good very fine*, Shaftesbury, Wulfric, *corroded, fair*, and York, Aelfwine, *very fine.* 3
- 142* ——— Expanding Cross (Light) with Jewel Cross style portrait, York, ARNGRIM ON EOF, 16.6 (cf. SCBI, Merseyside, 758-760, Arngrim Lo). *Obverse very fine, reverse weak, fine, rare.* 1
- 143* ——— ——— LFNNAÐ ON EONFRI, 18.1 (cf. SCBI, Yorkshire, 264, ex FEJ). *Very fine and rare.* 1
- 144* ——— Helmet, York, SCVLE ON EOFERPII (SCBI, Yorkshire, 313). *Extremely fine.* 1
- 145* ——— Sovereign/Eagles, Exeter, ÆLFRIC ONN EXEC (Brettell 190). *Almost extremely fine.* 1
- 146* ——— Hammer Cross, Derby, FROMA ON DOR. *Reverse a little double struck, very fine and very rare.* 1
- 147 ——— (2), Hastings, PVLFRIC ON HÆSTI (HHK 129) and Lewes, GODPINE ON LÆPE (HHK 257). *Good very fine and better.* 2
- 148* ——— Steyning, DIORMAN ON STÆNIG (HHK 35). *Extremely fine.* 1
- 149 ——— (2), Thetford, ATSER ON ÐETFOR (Carson 95), *large die flaw on reverse, almost very fine*, and Steyning, Diorman, *reverse double struck, very fine.* 2
- 150 ——— (2), Wallingford, Brunwine, *very fine*, and Winchester, Godwine, *obverse double struck, fine, reverse good very fine.* 2
- 151** ——— Winchester (2), both Brihtmaer, one with small bust. *Extremely fine and nearly so (obverse with trace of corrosion).* 2

LOT		
152*	— — —	Worcester, GARVLF ON PIHRE. <i>Overstruck but very fine and very rare.</i> 1
153*	— — —	LIOFSTAN ON PIHRE (FEJ 974). <i>Extremely fine and very rare.</i> 1
154	—	Facing, Bedford, SIGOD ON BEDEFO, <i>rev.</i> with bar in field. <i>Inner circle crack, obverse very fine, reverse fine.</i> 1
155	— — —	(2), Ipswich, Brihtric, <i>rev.</i> crescent in field, <i>corroded, fair,</i> and York, Ulfcetel, <i>very fine.</i> 2
156*	—	Pyramids, Chester, LEOFNAD ON LEGEC (SCBI, Chester, 384). <i>Good very fine.</i> 1
157*	Harold II, Lewes,	OSPOLD ON LEPEEI (HHK 278). <i>Extremely fine.</i> 1
158*	— — —	A similar coin. <i>Almost extremely fine.</i> 1
159*	—	Steyning, DERMON ON STÆNI (HHK 40). <i>Extremely fine.</i> 1
160*	—	York, OVÐGRIM ON EOF (SCBI, Yorkshire, 691). <i>Obverse double struck, fine, reverse better than very fine.</i> 1
161*	William I, Profile Left (BMC I), Romney,	PVLFMÆR ON RV (BMC 39). <i>Two scratches on obverse, very fine.</i> 1
162*	—	Bonnet (BMC II), York, HARÐYL ON EOF (BMC 170). <i>Almost extremely fine.</i> 1
163*	—	Two Stars (BMC V), Bristol, LFOFINE ON BRIES (BMC 299). <i>Very fine, toned.</i> 1
164*	— — —	Lincoln, PIHTRIC ON LINC (cf. BMC 334). <i>Very fine.</i> 1
165*	— — —	Northampton, SEPINE ON HAMTV. <i>Very fine and rare.</i> 1
166	—	Paxs (2), Chichester, Brunman (BMC 599), and Southwark, Lifword (BMC 963). <i>Good fine and very fine.</i> 2
167	— — —	Sudbury, PVLFRIC ON SVÐ (BMC 996). <i>Fine and rare.</i> 1

Lot

- 168 ——— (3), Thetford, Folcaerd (BMC 1005), Wilton, Sewine (BMC 1063) and Winchester, Godwine (BMC 1080). *Nearly very fine.* 3
- 169* William II, Voided Cross (BMC III), Southwark, LEFPINE ON SVÐ (BMC 221). *Obverse scratched, fine, reverse very fine, rare.* 1
- 170* Henry I, Pellets in Quatrefoil (BMC XIV), Bristol, HERDI[G : ON : B]RI[S]T[LO :] (BMC 110). *Edge snick, legends part flat, otherwise very fine, very rare.* 1
- 171* ——— London, ALFRIC : ON : LVNDE : (BMC 137). *Corroded at bottom edge and reverse off-centre, but very fine.* 1
- 172* ——— Shaftesbury, A[LDR]ED : ON : S[A]FTE : (BMC 165). *A little flat, almost very fine, rare.* 1
- 173* ——— Southwark, ALGAR : ON : SVÐPER* (BMC 172). *Edge snick, a little off-centre, almost extremely fine, rare thus.* 1
- 174* ——— ——— LEFPINE ON : SVDPE : (BMC 176). *Edge snick and with slight edge cracks, obverse very fine, reverse better.* 1
- 175 Stephen, Watford (BMC I) (2), London, Tovi, and Southwark, Wulfwold. *Fine or better.* 2

Later English Silver Coins

- 176 Longcross Pence, Bristol (3), Elis (IIIb), Roger (IIIbc) and Walter (IIIb). *Very fine or nearly so.* 3
- 177 ——— (3), Bury St. Edmunds, Randulf (Vc), *cuts along voided cross on reverse otherwise very fine*, Norwich (2), Ion (IIIc), *fine*, and Jacob (IIIb), *nearly very fine*, and Northampton (3), Lucas (IIIb), *off-centre*, Philip (IIIb) and Willem (IIIb), *all fine.* 6
- 178 ——— Canterbury (6), Gilebert (Vb), Ion (Vc), Nicole (IIIc), Robert (2—Vb and Vg) and Willem (IIIc). *Very fine or nearly so.* 6
- 179 ——— Carlisle, Robert (IIIb). *Very fine and very rare.* 1

LOT		
180	— (3), Gloucester, Ion (IIIc), <i>one quarter flat</i> , Hereford, Roger (IIIb) and Ilchester, Randulf (IIIb). <i>Except as stated, very fine.</i>	3
181	— (3), Lincoln (IIIc), <i>very fine</i> , and Newcastle (2), Henri (IIIb) and Roger (IIIb), <i>very fine and fine.</i>	3
182	— London (8), Davi (Vb), Johs (Vc), Nicole (2—IIIc and Vb), Renaud (Vg), <i>fine</i> , Ricard (2—IIIb, <i>double struck</i> , and Va) and Walter (Vc). <i>Except as stated, very fine.</i>	8
183	— (2), Oxford, Willem (III), <i>centres flat, fair</i> , Wallingford, Ricard (IIIb), <i>very fine, rare.</i>	2
184	— York (3), Ion (IIIa), Jeremie (IIIb), <i>both very fine</i> , and Tomas (IIIb), <i>fine</i> ; an imitation, <i>very fine.</i>	4
185*	Richard II, Groat, Group I with style of Edward III, pellet over central lis of crown (N.1320; S.1678), <i>irregularly-clipped (61.4 grains), obverse fine, reverse very fine (illustrated)</i> , and a London, Halfpenny, Intermediate style, <i>fine.</i>	2
186	Henry IV, Light Coinage, York Penny of Archbishop Bowet, with annulet on breast and before mint name (N.1364; S.1734). <i>Plugged, fair and rare.</i>	1
187	Henry V, Class C, Groats (3), all with mullet on right breast, <i>fine</i> , and a Half-Groat, similar, <i>scratched both sides, fair.</i>	4
188	— York Penny, <i>fair</i> , and London Halfpennies (4) with broken annulets by crown, <i>fine or better.</i>	5
189*	— London Halfpenny, Class F with annulet and trefoil by crown (N.1411; S.1796). <i>Almost extremely fine.</i>	1
190	Henry VI, Annulet, Groats (4), London (2) and Calais (2), <i>extremely fine and very fine</i> , Half-Groats (6) and Pennies (2), all Calais. <i>Except as stated, mostly fair or fine.</i>	12
191	— Rosette-Mascle, Groats (4), London (2) and Calais (2). <i>Very fine or nearly so.</i>	4
192	— — York Pennies of Archbishop Kemp (2), both with mullets by crown, reading ANGLIE (N.1451 (iii); S.1868). <i>Fine and better.</i>	2

Lot

- 193 — Pinecone-Mascle, Groats (5), London and Calais (4) and a Half-Groat of London. *Second partly corroded, mostly very fine or nearly so.* 6
- 194 — London Halfpennies (3), Pinecone-Mascle, *chipped, fine,* and Leaf-Pellet (2), both with leaf on breast, *very fine and fine.* 3
- 195 Henry VIII-James I, Shillings (5), Sixpences (6), Groats (4) and smaller (3). *Mostly fair.* 18
- 196 Charles I, Tower, Half-Crowns (3), *one false,* Shillings (6), Half-Groats (5) and a Penny, *mostly fair or fine;* Commonwealth, Half-Groat and Penny, *good very fine and fine.* 17
- 197* — Lundy Island, Shilling, 1646, m.m. plumelet, *obv.* plumelet in front of king's face, *rev.* scrolls over Declaration (N.2520; S.3036). *Very fine.* 1
- 198 — Provincial Issues (6), Bristol, Half-Crown, Aberystwyth, Groat and Threepence, Oxford, Threepences (2) and a York, Threepence. *First clipped to inner circle, second creased, others all pierced, fine or very fine.* 6
- 199 — Pattern Half-Groats by Briot (3), all with *rev.* interlocked C's, BRIT (2—N.2687), *extremely fine and nearly so,* and ANG SCO (N.2684), *very fine;* Briot Sixpences (2), both m.m. anchor, *very fine and fine.* 5
- 200* — Pattern Unite (?) in silver, by Abraham Vanderdoort, m.m. lis, king's head left, *rev.* crowned shield, FLORENT legend (N.2655). *A very fine cast, rare.* 1
- 201 Crowns (5), 1688, *fair,* 1696, *very fine but initials engraved on reverse,* 1736, *obverse scratched, fine,* 1821, *fair,* 1822 TERTIO, *good very fine.* 5
- 202* George I, Crown, 1720/18 (ESC 113), *very fine.* 1
- 203* Victoria, Proof Crown, 1839, as issued in the sets (ESC 279). *Obverse with minor marks on the face and in the field, otherwise brilliant, rare.* 1
- 204 Half-Crowns (4), 1743, 1745, both roses, *both fine,* and 1745, *edge cut,* 1746, both LIMA, *both very fine.* 4

LOT

- 205 George IV, Half-Crown, 1826 (ESC 646), *proof-like mint state*, a Half-Crown, 1821, and a Bank Token, Three-Shillings, 1812, *both very fine*. 3
- 206 Charles II, Shillings (5), 1663 (ESC 1022), *almost extremely fine, toned*, 1681/0 (ESC 1061 A), *fine and rare*, others (3), *fair*. 5
- 207 James II, Shillings (2), 1685, *rev. no stops* (ESC 1069), *very fine and rare*, and 1687/6 (ESC 1072), *fine*. 2
- 208 Shillings (5), 1723 SSC, 1758, 1816, 1817, 1820, and Bank Token, One-Shilling-and-Sixpence, 1812 (2), types differ. *Very fine or better*. 7
- 209 George III, "Northumberland" Shilling, 1763 (ESC 1214). *Cracked (4 o'clock), but extremely fine*. 1
- 210 — Shillings, 1787 (3), without hearts (2), with and without stop above head, and with hearts (ESC 1216, 1218, 1225). *Extremely fine or better*. 3
- 211* — Pattern Shilling, 1787, by Pingo, with trace of beads at edges (ESC 1241). *Brilliant*. 1
- 212 Victoria, Proof Shilling, 1839, as issued in the sets (ESC 1282). *Brilliant*. 1
- 213 Charles II, Sixpences (5), 1677 (2), 1683 (2) and 1684. *Last two nearly extremely fine, others fine*. 5
- 214 James II, Sixpence, 1686 (ESC 1525). *Good very fine*. 1
- 215 Sixpences (11), 1787 (2), 1816 (2), *about extremely fine*, 1831, *mint state*, and others (6), 1758-1887, *mostly fine*. 11
- 216 Maundies (50) from Charles II to Victoria, various, *fine to extremely fine*; a Proof Groat, 1839, *brilliant*. 51
-
- 217 Edward VII, Coronation 1902, "short" specimen set, A/ £1 to R 1d. *Matt proofs, in original case*. 11

English Coppers and Miscellaneous

Lot		
218	Northumbria, Æ stycas (21), Eanred (9) including ÆR, Wulfheard, <i>very fine</i> , Aethelred II (9) and Archbishop Wigmund (3). <i>Mostly fine or very fine.</i>	21
219	Charles II, Farthing, 1675, <i>almost extremely fine</i> , and other English Æ (13, one tin) and other pieces (10), various, <i>mostly fine.</i>	24
220	— Pattern Farthings, 1665, in ÆR (4), short hair (3) and long hair (1), <i>first almost extremely fine, others fine</i> , and a medalet, 1676, types similar (BMC 491), <i>extremely fine</i> ; George III, Pattern Sixpence (?), 1790 (ESC 1645), <i>brilliant and toned</i> ; and another	7
221	George III, Restrike Pattern Penny, 1797, in silver, by Küchler, large undraped bust right, <i>rev.</i> Britannia sitting on a globe, small letters both sides (BMC 1140). <i>Reverse rim filed, brilliant and toned, extremely rare.</i>	1
222	Victoria, Proof Penny and Farthing, 1839 (BMC 1479 and 1556). <i>Brilliant.</i>	2
223	— Proof Penny, 1839 (BMC 1479). <i>Brilliant.</i>	1
224	Ireland, James I, Second Coinage, Shilling, m.m. rose, 3rd bust, <i>very fine</i> , James II, Gunmoney Crown, 1690, <i>very fine</i> , smaller (10) and another, <i>mostly fair or fine</i> ; Anglo-Gallic, Henry VI, Gros Blancs (2), St. Lo and Nevers, <i>fine</i> ; Roman, Fourth Century, Third Brass (12), Constantine I (4), Urbs Roma (6) and Constantinopolis (2), <i>very fine or better.</i>	27

Scottish Coins

225	William the Lion, Pennies (3), Cross and Pellets Issue (1), Berwick, William, and Short Cross and Stars Posthumous Issue (2), Henri le Rus and Hue Walter (S.5024 and 5029 (2)). <i>First part flat and others lightly scratched, otherwise nearly very fine.</i>	3
226*	Alexander III, Early Transitional Coinage, Penny, Glasgow, Robert, <i>obv.</i> bust right with sceptre, <i>rev.</i> short cross and stars as Alexander II, ROBERT · ON · GLA · (S.5039). <i>Centres part flat but fine, the mint (and moneyer) not recorded for this rare issue.</i>	1

Lot		
227	— Pennies (5), First Coinage (1), Berwick, Walter, and Second Coinage (4). <i>Last with piece broken away having been pierced at top, nearly very fine.</i>	5
228	John Baliol, Pennies (2), First and Second Coinages (S.5065 and 5071). <i>Fine.</i>	2
229*	Robert Bruce, Penny (S.5076). <i>Left edge corroded and chipped, otherwise very fine.</i>	1
230	— — A similar coin. <i>Legends partly weak and traces of corrosion, but fine.</i>	1
231	— — Another, similar. <i>Almost very fine.</i>	1
232	David II, First Coinage, Penny, and Second Coinage, Groats (2), <i>one clipped</i> , Halfgroats (2), small young bust and older, larger bust, with pellet behind crown and in 2nd quarter of <i>rev.</i> , and Pennies (2), all Edinburgh. <i>Fine or better.</i>	7
233	Robert II, Groats, Edinburgh (2—S.5131). <i>Fine.</i>	2
234	Robert III, Heavy Coinage, Groats (5), First Issue (4), Second Issue (1) and a Halfgroat, First Issue, all Edinburgh. <i>Mostly fine.</i>	6
235	James I, Fleur de Lys Groats (2), First and Second Issue, both Edinburgh. <i>Some verdigris, about fine.</i>	2
236*	— Penny, Edinburgh, reads IACOBI (S.5204). <i>Striking split at bottom, about fine, rare.</i>	1
237*	James II, Second Coinage, Groat, Type II, Edinburgh (S.5233). <i>Very fine.</i>	1
238*	— — Halfgroat, Edinburgh (S.5235). <i>Two striking splits, otherwise very fine, rare.</i>	1
239*	James III, Base Issue, Thistle Halfgroat (S.5272). <i>A little smoothed, fine and very rare.</i>	1
240*	— Light Issue, Groat, Edinburgh (S.5280). <i>Good very fine.</i>	1
241	— — — A similar coin. <i>Better than fine.</i>	1

LOT		
242	— Main Issue, Groats, Edinburgh (2—S.5287). <i>Fine.</i>	2
243	— Billon Pennies of Edinburgh (4), with annulet in 1st and 4th quarters, with extra pellet in each quarter, with saltires by bust, and without marks. <i>Fair to fine.</i>	4
244*	James IV, Light Coinage, Groat, Edinburgh, with QRA at end of <i>obv.</i> legend (S.5340). <i>Slight trace of double striking, but very fine.</i>	1
245	— Billon Placks (3), <i>one with portion broken away</i> , and Pennies (2). <i>Fair or fine.</i>	5
246*	James V, Second Coinage, Groat, Type III (S.5378). <i>Reverse stained but very fine.</i>	1
247	— — Groats (4), <i>one with piece broken away, others nearly very fine</i> ; Billon Coinages, Placks (2) and a Bawbee, <i>fair.</i>	7
248	Mary, First Period, Testoons, Type IIIb (2), both 1558, with and without annulets below MR, latter with thistle countermark on <i>rev.</i> (S.5406, 5407), <i>fine and very fine</i> , Bawbee, Edinburgh, and a Plack, <i>obv.</i> with countermark star in heart, <i>fine and fair.</i>	4
249	Francis and Mary, Testoon, Type II, 1560, with thistle countermark on <i>rev.</i> (S.5418) and Billon Groats (2). <i>Nearly very fine.</i>	3
250	James VI (11): First Coinage, Ryals (2), 1567, 1570, latter with thistle countermark on <i>rev.</i> ; Second Coinage, Nobles (2), 1572, <i>pierced</i> , and 1574; Eighth Coinage, Merk, 1602, Half-Merk, <i>clipped</i> , Quarter-Merks (2), 1602 and 1603; Billon and Copper Coinages, Placks (2) and a Twopence. <i>Fair to fine.</i>	11
251	— Sixth Coinage, Balance Half-Merk, 1591 (S.5491) and Seventh Coinage, Ten-Shillings, 1594 (S.5493). <i>First double struck and with edge damage, fine or better.</i>	2
252*	— Eighth Coinage, <i>A</i> Sword and Sceptre Piece, 1602 (S.5460). <i>Slightly crimped and edge slightly irregular, very fine.</i>	1

LOT

- 253 Charles I, Thirty-Shillings (3), First Coinage (1) and Third Coinage (2), one with F by horse's hoof, *other very fine*, Half-Merk, Forty-Pence (2), Briot and Falconer, Twenty-Pence (3) and Æ Twopences (8), early (4) and late (4). *Mostly fine.* 17
- 254* Charles II, First Coinage, Two-Merks, 1673, thistle below bust (S.5608). *Edge irregular, otherwise very fine for issue.* 1
- 255 ——— Merks (2), 1669 and 1672, Second Coinage, Quarter-Dollars (2), 1675, 1680 and Sixteenth-Dollar, Æ Bawbee, 1678, Bodle, 1677, and James VII, Ten-Shillings, 1687. *Fine.* 8
- 256 William and Mary, Ten-Shillings, 1691, and Five-Shillings, 1694; William II, Forty-Shillings, 1695, Ten-Shillings, 1697, and Five-Shillings, 1695; Anne, Five-Shillings (2), 1705 and 1705/4. *Forty-Shillings nearly very fine, others mostly fine.* 7
-
- 257 Lead Communion Tokens (29), Dalrymple, 1742 (21), all round, Abercorn (2), one round, 1832, Ayr, 1855, Innerkip, 1764 (2), Kilmarnock, 1842, Monkton and Prestwick, 1839, and another. *Very fine or better (rectangular except as stated).* 29

United States Coins

- 258* Massachusetts, Oak Tree Shilling, 1652 (Noe 5). *Obverse off-centre and a little smoothed, fine, reverse very fine.* 1
- 259* ——— Oak Tree Threepence, 1652 (Noe 25). *Bent, obverse fair, reverse fine.* 1
- 260* Dollar, 1841. *Mottled tone, almost extremely fine.* 1
- 261* Half-Dollar, 1838. *Extremely fine.* 1
- 262* Quarter-Dollar, 1804. *Good very fine, rare.* 1

Lot

- 263 Half-Dime, 1845, *almost mint state*, copper 2-Cents (2), Large Cents (4), Small Cents (8) and another, *mostly fine or very fine*; an imitation California, *Æ* $\frac{1}{4}$ -Dollar, *extremely fine*; Spain, *AR* 2-Reales, 1793, Madrid, *very fine*. 17

Commemorative Medals

- 264 Anne, *AR* (4), 1702, Coronation, 35 mm, *extremely fine*, 1704, Queen Anne's Bounty, 45 mm, *very fine*, 1709, Tournai Taken, 39 mm, *fine*, 1713, Peace of Utrecht, 35 mm, *very fine*, and Charles I, *AR* (1), 1633, Birth of Prince James, 30 mm, *fine*. 5
- 265 Leicester, Pitt Club (2), similar, by T. Webb, both with bust left, *rev.* legend outside wreath, *AR*, 48 mm (BHM 835), *one with obverse very scratched and suspensory loop broken off, otherwise both very fine*, and Election, 1826, WM, 46 mm (BHM 1264), *fine*. 3
- 266 Coronation Medals in *AR* (5), George IV, William IV, Victoria, and Edward VII (2), large and small. *Extremely fine or nearly so*. 5
- 267 — (7), *AR* (4), George IV (2), Victoria, Edward VII, small size, and WM (3), George IV, 46 mm, and William IV (2), 55 mm and 41 mm (BHM 1077, 1484, 1485); Marriage of Prince of Wales and Alexandria, 1863, WM, 51 mm; Victoria, Diamond Jubilee, 1897, *AR*, large size; Queen Charlotte (d. 1817), Visit to Bath, 1817, *Æ*, 38 mm (BHM 934). *Extremely fine or nearly so*. 10
- 268 Victoria, Board of Trade, Sea Gallantry Medal, Instituted 1854, by B. Wyon, in *AR*, 48 mm, awarded to Robert Hogan, Wreck of the "Lilian" on the 16th December 1901. *Obverse rim knock (4 o'clock), but good very fine*. 1
- 269 — Visit to London of Emperor William II, 1889, by L. C. Lauer, half-length figure of Queen Victoria left (Milford Haven 644), *rev.* Britannia facing, seated on a lion lying on a quay, St. Paul's to left and ship to right in background, date in field above, *AR*, 65 mm (Würzbach-Tannenbergs 9132; Lauer 107). *Mint state and rare*. 1

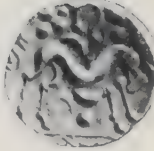
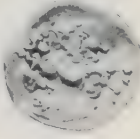
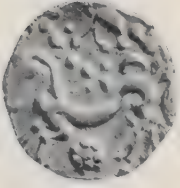
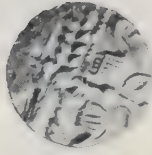
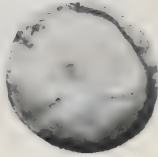
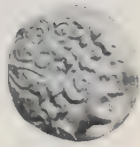
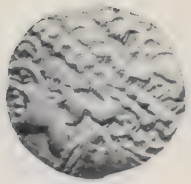
LOT

- 270 Railway Medals in WM (2), both Edinburgh to Glasgow Railway, 1842 with *obv.* Almond Valley Viaduct, one with *rev.* Glasgow Railway Station and Tunnel, the other with *rev.* Royal Exchange Square, 48 mm (Moyaux p.92/18 and 19). *Extremely fine.* 2
- 271 Mudie's National Medals in WM (45), Nos. 1 (2), 2, 3 (2), 4 (2), 5 (2), 6, 7, 9, 10 (2), 11, 14 (2), 15, 16 (2), 19 (2), 20 (2), 22 (2), 24 (2), 25, 26 (2), 27, 28, 30, 31, 34 (2), 35, 36 (2), 38 (2), 39 (2) and 40, all 40 mm. *Some with corrosion on high points, otherwise extremely fine, all contained in a fitted case (for 45 medals) to resemble a leather-bound book (slight damage).* 45
- 272 Union of Ireland with Great Britain, 1801, by Küchler, Æ, 48 mm (BHM 523), Wellington, Battle of Vitoria, 1813, by Mudie, Æ, 41 mm (BHM 756), WM (2) of Howe, 1799. and Cornwallis, 1802 (BHM 468, 589), and Robert Peel, 1837, Æ, 46 mm (BHM 1749), *all extremely fine*; other British medals (11), in Æ (7), *fine*, and WM (4), *very fine.* 16
- 273 France, Ministry of Cardinal Fleury (later Prime Minister), 1731, by J. C. Roettiers (signed both sides), *obv.* bust right, *rev.* allegorical scene, VIRTUTES REGNI ADMINISTRÆ, MDCCXXXI in exergue, Æ, 67 mm, *good very fine*, and Charles X, by Gayard, *rev.* 15-line inscription, Æ, 51 mm, *mint state*; Vatican, Paul, III AN XII, Æ cast, 49 mm, *fine*; Netherlands, Marriage of Prince Frederick, 1825, to Princess Louise of Prussia, by G. Loos, Æ, 43 mm, *mint state.* 4
- 274 — Treaty of Amiens Broken and Hanover Occupied, 1803, by Denon, Æ, 40 mm (Br. 271), *extremely fine*; and Musée Napoleon, Æ, 32 mm, *very fine.* 2

Cabinet

- 275 Mahogany cabinet, 12in. high, 11½in. wide and 10½in. deep, brass handles at sides, lock (no key, escutcheon missing), containing 20 trays with 588 finger-pierced, felt-lined holes (four trays each with 49 holes of 1in. (25 mm.), five trays each with 36 holes of 13/16in. (30 mm), four trays each with 25 holes of 17/16in. (36 mm), four trays each with 16 holes of 15/8in. (41 mm) and three trays each with 16 holes of 2in. (50 mm)). *A useful cabinet in very good condition.* 1

END OF SALE



1

2

3

4

12

14



15

16

17



20

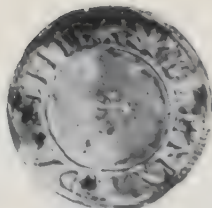


19



23

24



25

32

33

35

36

38



39

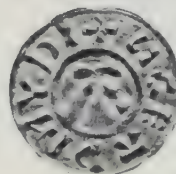
40

42

43

44

45



46

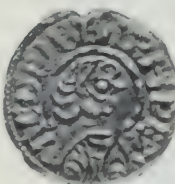
47

48

49

50

51



52

53

57

58

59

60



61

62

63

64

65

67



68

69

71

72

78

79



80

81

82

83

85

87



91

92

93



94

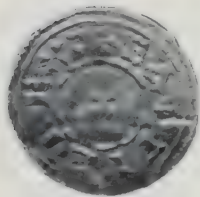
95

96

97

98

99



100

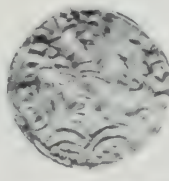
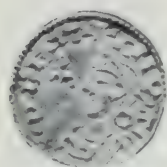
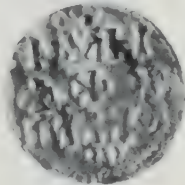
101

107

122

122

125



130

131

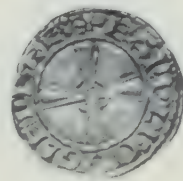
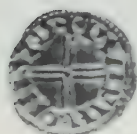
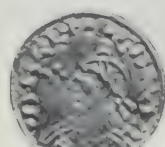
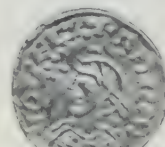
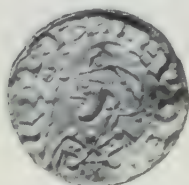
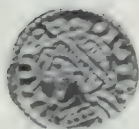
132

133

134

135

136



137

138

139

140

142

143



144



145



146



148



151



151



152



153



156



157



158



159



160



161



162



163



164



165



169



170



171



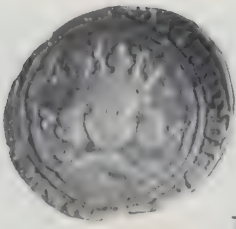
172



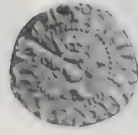
173



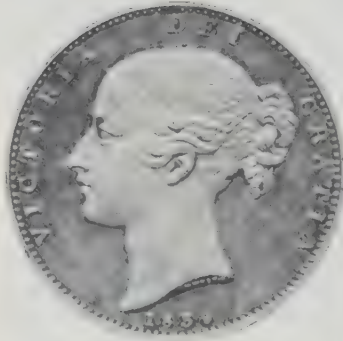
174



185



189



197



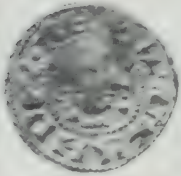
202



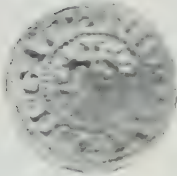
203



200



211



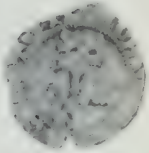
226



237



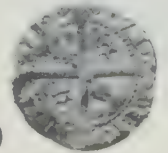
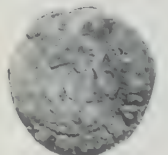
229



236



238



239



240



244



246



252



254



258



259



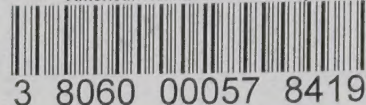
260



261



262



SALE CATALOGUES

On the average we issue twelve or more Coin Catalogues and three Naval & Military Medal Catalogues each year, some of which are usually of Sales of important Collections.

CATALOGUE SUBSCRIPTIONS

Sale Catalogues, frequently illustrated, are normally posted to Subscribers about three weeks prior to the date of Sale.

Lists of "Prices Bid" are issued after each Sale, thus giving at a glance a reliable guide to value. The final test of value must always be auction prices rather than the figures given in books of reference, for changing times and fashions soon render the latter obsolete and misleading. The Lists of "Prices Bid" will probably be enclosed in a following Sale Catalogue.

AIR MAIL POSTAGE

To allow subscribers resident outside Europe time to submit Postal Bids, Sale Catalogues will, if desired, be sent by Air Mail. Air Mail postage is not, however, included in the Subscription Rate and the cost must be borne by the Subscriber. In such cases a deposit against the cost is required.

ANNUAL SUBSCRIPTION RATES

(commencing from 1st January)

Type of Catalogue	SURFACE MAIL (including postage)		AIR MAIL (excluding postage)
	U.K., I.ofM. C.I., Irish Republic	ALL other places	
COIN Sales	£12	£15	£10
NAVAL & MILITARY MEDAL Sales	£1	£2	£1

Deposit required against cost of AIR MAIL postage:

Coin Sales add £10

Medal Sales add £1

Catalogues of past Sales cannot be supplied.

GLENDINING & CO.

AUCTIONEERS & VALUERS

of

COINS & MEDALS

Buyers are NOT liable for Commission on the cost of their purchases.

CASH ADVANCES

If required, cash advances will be made at our discretion and at our valuations on the understanding that Lots are submitted for sale ENTIRELY WITHOUT RESERVE and at a Commission Rate of 12½% on realisation.

In the event of repayment of the Cash Advance before the Sale takes place, a charge of 10% on the amount advanced will be payable.

COMMISSION FOR SELLING

10% on the amount realised	}	Minimum Charge of £10.00 per Lot
5% on reserve prices for Lots remaining unsold		

All goods will be held insured against fire and burglary, pending sale, at a premium of £1 per £100, unless the Auctioneers are instructed to the contrary.

SETTLEMENT MADE 14 DAYS AFTER DATE OF SALE

EXPERT ADVICE

Expert advice is immediately available for the examination of property submitted to these Rooms for Sale by Auction.

VALUATIONS

Probate and Insurance Valuations on Collections at agreed scale of charges.

Further information on application to the Auctioneers at:

7, Blenheim Street, New Bond Street, London, W.1.

Telephone: 01-493 2445 (3 lines)